

REIMAGINING SPACES



IFM SERVICES

Compass Group Overview:

Compass Group is the world's leading provider of contract food and support services with presence in 45 countries. It is a London headquartered FTSE 20 organisation with global revenue of £25 billion.

More than 96 of the Fortune 100 companies are its clients. Compass has been ranked #1 in the "Diversified Outsourcing Services" in FORTUNE's World's Most Admired Companies (WMAC) 2020 & 2021.



We operate in
33+
Countries



We serve
5.5+ Bn
meals a year



We Employee
550k+
Great People



Our Revenue Is
£ 31.30 Bn
British Pounds

Compass India:

Compass India is a wholly owned subsidiary of Compass Group PLC. Since 2008, Compass Group India is committed to meeting the varied requirements of Indian corporate, healthcare, education, and numerous other sectors, maintaining world-class standards of delivery.



We operate in
45+
Cities



We work in
450+
Client Locations



We Employee
32,000+
Great People



We serve
200+
MN sq.ft. Area

Support Services:

We apply our ‘hospitality mind-set’ to the ‘industrial efficiency’ necessary to manage and deliver multiple support services. We implement standardised processes through our world-leading operating platform, the Compass Service Framework, which drives consistency and continuity, whether for single site, national or international multi-site contracts.



IT/ITeS



Sectors We Cater To:

Our businesses give our clients access to unrivalled experience, global best practices and market leading innovations.

BFSI



Manufacturing



Education



Pharma & HC



Data Centres

Compass Group India is certified with the following ISO Standards



OHS – Safety - ISO 45001



EHS – Environment- ISO 14001



QMS – Quality- ISO 9001



Asset Management - ISO 55001

Some of Our Valued Clients

CORPORATE

RELIANCE INDUSTRY LIMITED | DUPONT | ICICI LOMBARD | ICICI PRUDENTIAL | MEDTRONIC | SAMSUNG | IFF | AMERICAN EXPRESS | STT TELEMEDIA | GLOBAL LOGIC | MCDERMOTT | ATKINS | BOSCH

MANUFACTURING

ADAMA | MARATHON | HONDA | JCB | MICHELIN | RELIANCE INDUSTRIES LIMITED | SANMINA | DS GROUP | TATA ELECTRONICS | RELIANCE LIFE SCIENCE

IT/ ITES/ DATA CENTRE

QUALCOMM | TCS | IGT | VODAFONE | HUGHES | LTI MINDTREE | NUCLEUS SOFTWARE | ATOS SYNTEL | TECH MAHINDRA | NETMAGIC | MICROLAND | SIFY | COGNIZANT | TEXAS INSTRUMENT | ADANI DATACENTER | BOEING INDIA | PHONEPE

HEALTHCARE

APOLLO HOSPITAL | WOCKHARDT | HN HOSPITAL- RELIANCE | INSTITUTE OF NEUROSCIENCE | MEDANTA | ALAMELU CANCER CHARITABLE FOUNDATION | SUN PHARMA | LIVA | AGADI HOSPITAL | CMC | TATA MEMORIAL HOSPITAL | STRYKER | USP

ADVISORY

PWC | CRISIL | KPMG | AMARCHAND MANGALDAS | BUREAU VERITAS | MCKINSEY

PROJECT MANAGEMENT

BHARTI REALITY LIMITED | K RAHEJA | PRITECH PARK

OTHERS

SHIV NADAR UNIVERSITY | HARAPPA | RGA | UNITY GROUP | TV TODAY | FLIPKART | INDIA GLYCOL LIMITED | TATA STEEL | WELLINGTON COLLEGE



Compass India Integrated Facility Management- ONE-STOP SOLUTION

An integrated, self-performing solution that provides our clients with economic efficiency, guaranteed expertise and certified quality while improving the well-being of its end-users. Compass India offers a plethora of support services for enhanced consumer experience with heightened focus on safety.

Workplace Hygiene:

Good workplace hygiene practices reduce the risk of ill-health and injuries. They help improve productivity and keep consumers, workers and organisations safe. Our solutions cater to support clients as per their requirement and device a cleaner and greener regime for their facility.



Personalized
hygiene kit for
workstation
hygiene



Minimizes
chances of
infection



Cleaning
procedure:
Spray, Wipe
and Rub

Electrostatic Surface Protection Barrier:

Electrostatic Surface Barrier technology can completely cover even the most hard-to-reach nooks and crannies. It has been conducted in large spaces like cafeterias, auditoriums, conference halls, common spaces etc.



24/7 protection
against microbes



Kills pathogens
on contact



Touchless spray,
non-toxic and odourless



Validity: 06 months
to 1 year



Bi-monthly
ATP test



Easy & convenient
to use



INSIGHT:

Total Area Sanitized
43,42,697.92 sq.ft

Bactakleen Ultra Mist Herbal Formula:



Ultra-fine mist application,
prepared from herbal
extracts



Capable of deep
penetration including AC
ducts, cracks & crevices



Invisible, non-toxic
and odourless



Easy & convenient
to use



Kills more than
97% microorganisms



Validity: 2 months



INSIGHT:
Total Area Sanitized
1,10,000 sq.ft

Microbial Disinfection:



Fumigation technique used



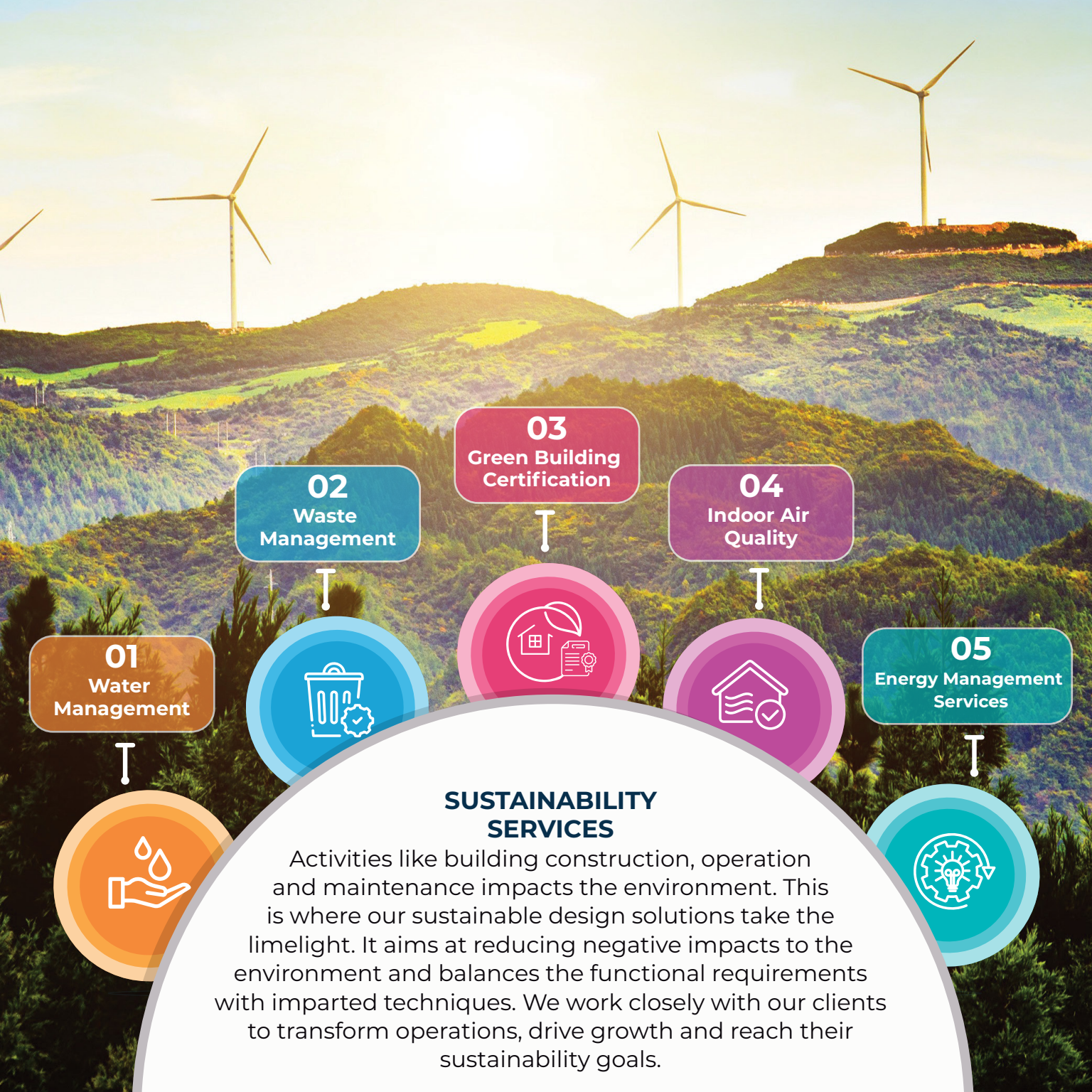
Daily spraying required



Duration: 3 hours minimum



INSIGHT:
Total 15 million sq. ft area pan India (during the pandemic)



01
Water
Management



02
Waste
Management



03
Green Building
Certification



04
Indoor Air
Quality



05
Energy Management
Services



SUSTAINABILITY SERVICES

Activities like building construction, operation and maintenance impacts the environment. This is where our sustainable design solutions take the limelight. It aims at reducing negative impacts to the environment and balances the functional requirements with imparted techniques. We work closely with our clients to transform operations, drive growth and reach their sustainability goals.

01 Water Management:

Our team of experts assess existing water consumption and requirement of the facility, identify gaps of water wastage, identify location of water consumption measurement and thereafter suggest ways to optimize water consumption.



No wastage
of condensate
water

No more
resource
depletion

Reduction of
raw water
consumption

Solutions Offered

Insight:

Managed water conservation project for **2 million sq.ft. built up area**

02 Waste Management:

We provide consultation to our client for various viable waste management solutions, disposal, recycling etc. We manage all kinds of waste ranging from organic, solid, fit-out waste and debris from Commercial & Residential Buildings. We ensure proper disposal & processing of the waste collected by composting, vermicomposting, anaerobic digestion and so on.

We ensure Garbage bag and container color coding with daily documentation & waste record for better management



Features:

Efficient use
of energy

Use of renewable
energy

Efficient use of
landscape

Improved IAQ for
health and comfort

Eco-friendly
equipment

Use of recycled/
recyclable material

Effective controls
& BMS

Sustainable
architecture and
design

03 Green Building Certification

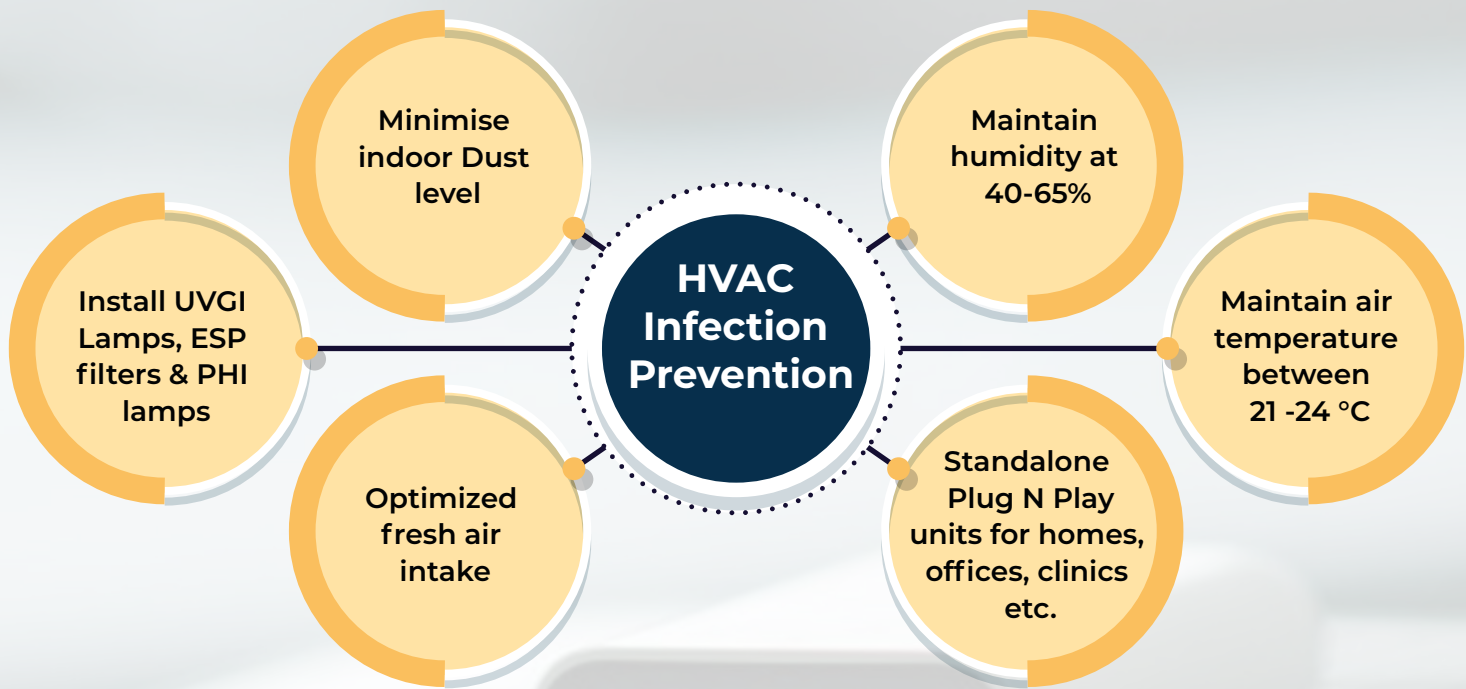
We facilitate clients for Online Project Registration with IGBC and score credit ratings as per achievements.



04 Indoor Air Quality

Our team of experts are trained in carrying out Indoor air quality (also called "indoor environmental quality") test to identify the content of unwanted gases indoor such as carbon dioxide (co2), bacteria & molds, volatile organic compounds and humidity and offer optimized solutions like:





Indoor Environment Disinfection Methodologies

Photo Hydro-Ionization technology (PHI) treatment

Reduced air pollutants

Easy to install in existing FCU, AHU, TFA, Ductabl

Standalone Plug N Play units for homes, offices, clinics etc.

05 Energy Management Services:

In the building industry, energy conservation and optimization is a key challenge and a strategic business objective for all building managers and asset owners. To address this we at Compass Group, have built an enduring and market appropriate energy practice which helps our customers to identify, track, monitor and conserve energy in a sustainable manner.



We have a team of dedicated certified energy managers and auditors on board with a thorough industry experience and exposure who diligently work towards devising the ways to reduce your energy consumption effectively and intelligently.



HOW DO WE DO IT



TECHNICAL SERVICES

Building Maintenance: Comprehensive upkeep services ensuring optimal functioning and safety of building infrastructure and facilities.

Command Centre Operations: Centralized monitoring and management of facility systems, ensuring efficient operations and rapid response to issues.

HVAC Systems: Installation, maintenance, and repair of heating, ventilation, and air conditioning systems for optimal climate control.

Electrical Systems: Ensuring safe and reliable electrical infrastructure through maintenance, repair, and upgrades of electrical systems.

Plumbing & Carpentry: Professional plumbing and carpentry services for maintenance, repairs, and installations to maintain functional and aesthetic standards.

Elevators & Escalators: Maintenance and repair services to ensure the safety and efficiency of elevators and escalators in buildings.

Fire, Life Safety: Comprehensive fire and life safety solutions, including equipment maintenance and emergency preparedness to protect occupants and property.

Robotic Tool- Based Services

We offer robotic vacuum cleaners that are convenient to use with enhanced safety and security. There is a real time tracking with live feed through the built-in cameras for better accountability and transparency in work.

5 LEVEL SAFETY MECHANISM

- 01 Laser
- 02 Sonar
- 03 Nudge Detection
- 04 Emergency Stop Button
- 05 Customized Motors

India's 1st IoT Enabled Lawn Mowing Robot



Other Robotic machines that we use are



Robotic tow
trucks



Industrial floor
cleaning robot



Robotic forklifts, stackers,
reach trucks, VNA trucks

BENEFITS

Possesses Robotic 6" Sense

Fastest speed

Highest coverage

Contactless

Environment friendly

Internationally certified



Landscaping/Horticulture Services

Comprehensive landscaping and horticulture solutions, including garden design, maintenance, and plant care, to enhance the aesthetic appeal and environmental quality of outdoor and indoor spaces.

CIVIL PROJECTS MANAGEMENT

Managing resources through various methodologies, keeping in mind the design specifications and project build.



Making an interior space ready for occupation with complete fit-outs solutions

Dry Wall partitions

MEP system integration

Building Fabric as per design

Procurement of assets etc.



Provide Partition/civil Work/ Interior

Our team of experts at Compass India plan and execute both interior and exterior civil work requirements.



RES-Repair Engineering Services

Our team of experts are multi-skilled and can repair the existing system equipment in the facilities.



Retrofit Jobs

Our staff members are well-versed in retrofitting jobs like addition of new technology or features to older systems, for example: Chiller plant retrofit, improving plant efficiency / increasing output.

PROJECTS COMPLETED

Renovation of Washrooms

We renovated two washrooms at one of our client sites in Mumbai. Following are the details:

LADIES WASHROOM: 5 lavatory, 5 washbasin, one cupboard, complete floors, side wall, false ceiling & lights were replaced. Total area covered- 1100 sq.ft

GENTS WASHROOM: 4 lavatory, 3 urinals, 4 basin, complete floor, side walls, false ceiling & lights were replaced. Total area covered- 1200 sq. Ft.



Contactless Tap Modification

Modifying the manual hand tap in washbasin to a foot pedal operated tap.

FEATURES

Easy default
resetting

Smart renovation
methodology

Aesthetics
remains intact



Acrylic Desk Panels

A method of safely separating desks to encourage social distancing while at office. We installed 495 acrylic panels on workstations across various locations in India.

FEATURES

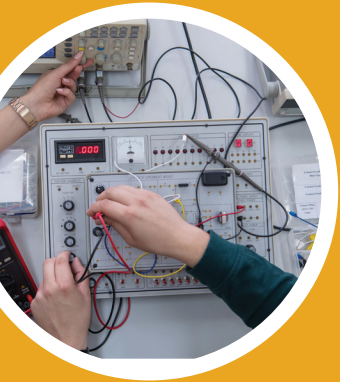
Panels are
durable

Easy to clean

VALUE ADDED SERVICES

Thermography

We use a non-destructive testing method that enables large areas to be surveyed quickly and cost effectively. This helps avoid unwanted breakdowns.



Power Quality & Harmonic Analysis

We monitor, measure, record all electrical parameters at the facility and analyze the problems via audits.

Duct Cleaning

We provide duct cleaning services for improved indoor air quality and reduced odor. We use purpose designed equipment for safe, fast and efficient contaminant removal.



Vibration Analysis

Using the Predictive Maintenance tool, we detect faults in rotating equipment (Fans, Motors, Pumps, compressor etc.). The vibrations and movements of the equipment are recorded that are later transferred to a computer and analyzed to locate the problem.



Pipeline Health Status Check

We use a non-destructive testing technique to check the health status of the fire line and water supply pipeline. This helps the client to act proactively and take preventive action.

Hygiene Measurement By ATP Meter

Using an ATP Meter gives us intelligence about the present level of contamination in the facility and the level of treatment required. For sampling, we choose all high touch surfaces like seats, doorknobs, lift buttons, handrail, etc. to know the risk level.



Carpet Shampooing

Carpet cleaning is performed to remove stains, dirt, and allergens from carpets. Common methods include hot water extraction, dry-cleaning, and vacuuming.

Facade Cleaning

Facade cleaning is the process of making sure the exterior of a building is clear of any dirt, grime, stains, and pollutants. How a facade is cleaned depends on the material it is made from and the equipment and solutions used are specific to that type of material to avoid any damages.



Automation & IT Enabled Services

A unique and innovative flagship solution in Facilities Space

- With heightened focus on facility operations, Saarthi-FX provides real time visibility of the entire region (discrete sites) to senior management, centrally
- Strengthen operating team's data analytics and reporting capability
- Data storage electronically, enable operating team to go back in history data for root cause analysis on a click of mouse
- Sustainable solution reduce paper consumption for logbooks



Low Value Purchase

Chemical Supplies

We have a large platform of vendor integration to offer chemicals for housekeeping services at our client locations for better cost optimization.

Stationary

We have empanelled vendors who can supply stationary on a short notice, at competitive prices. This leads to better cost optimization and smooth operations.

Mask/sanitisers

Using masks and sanitizers across all our sites has been made mandatory, be it for Compass staff or client employees. These essentials reduce the risk of infection and keeps one protected.



R.O.C. – Remote Operations Center

A first-of-its-kind in the Facility Management industry, ROC is a visionary technology solution to provide superior experience to our partners. ROC enables proactive remote management and monitoring for highly distributed operations, helping our partners to strategically transition from dedicated resource model to shared resource model. It allows hundreds of sites to come on the network, ensuring seamless monitoring, eliminating manual dependencies and significant cost optimisation.



BIM – (Building Information Management System)

BIM practices and technology can be applied to significantly enhance the efficiency and effectiveness of asset management and thereby the resulting benefits.



**Improved
Asset Management**



**Enhanced Collaboration
and Communication**



**Increased Cost
Savings and Efficiency**



**Enhanced Safety and
Compliance**



BIM is helping in digitizing the complete process, picking up info at right time for making it available for each identified piece of asset, installed at different locations, to the engineer requiring at any time; linked to virtual digital twin BIM model.

WORKPLACE BEVERAGE SOLUTION

We are constantly investing in research and development, working closely with our customers to keep up-to-date with consumers' tastes and preferences. Our team constantly focuses on what people want, not just their taste in coffee / tea but the way they wish to consume it, the times they want to enjoy it and the style in which they wish to experience it.



Fully Automatic & Touch Free

Mobile-based Web Interface

Simple User Interface

CONTACTLESS



SAFE AND HYGIENIC

- Smart Coffee & Tea Vending Machine using QR Code
- Auto scheduled cleaning cycle



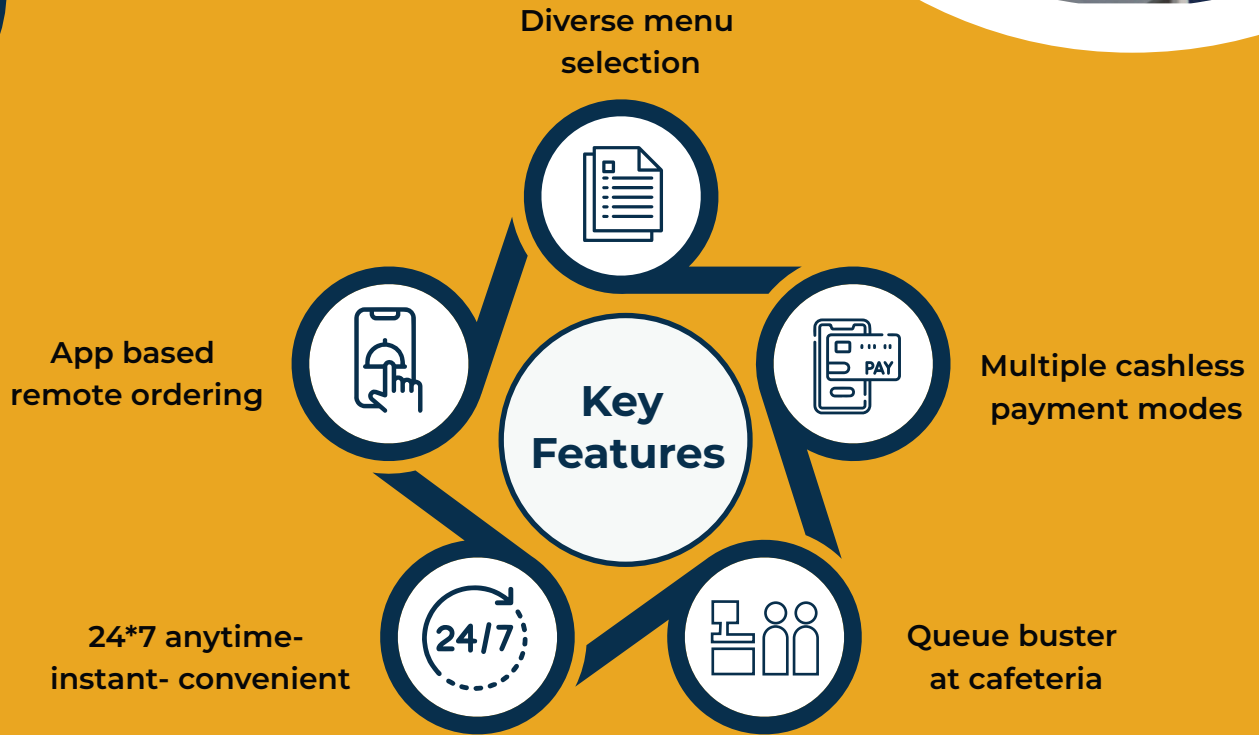
VALUE FOR MONEY

- Energy saving mode built-in machine
- Cost saving in every per cup

Contactless Vending Solutions

Workplace Food Solutions As Per The New Normal

We bring best-in-class processes to support our vending solution, in association with our vendor partners, enabled by effective digital technology.





COMPASS GROUP INDIA PVT. LTD. (SUPPORT SERVICES)

7th floor, Tower-B, Spaze I-Tech Park, Sector - 49, Sohna Road, Gurgaon,
Haryana-122018 | Tel: +91 124 4975400

For further information contact Mr. Mrinmoy Nath

✉ mrinmoy.nath@compass-group.co.in

☎ +91 9205333079

Kindly click
on the link



Facebook



LinkedIn



Instagram

Follow us for updates

FORTUNE
WORLD'S MOST
ADMIRIED
COMPANIES
2020



9001:2015



14001:2015



45001:2018



55001:2014